

Panel on Diversifying Economic Quality:
Innovative Teaching Techniques and Diverse
Undergraduate Populations

*Social Entrepreneurship and
Economic Education*

Jon Isham
Professor of Economics and
Faculty Director of the Middlebury Center for
Social Entrepreneurship

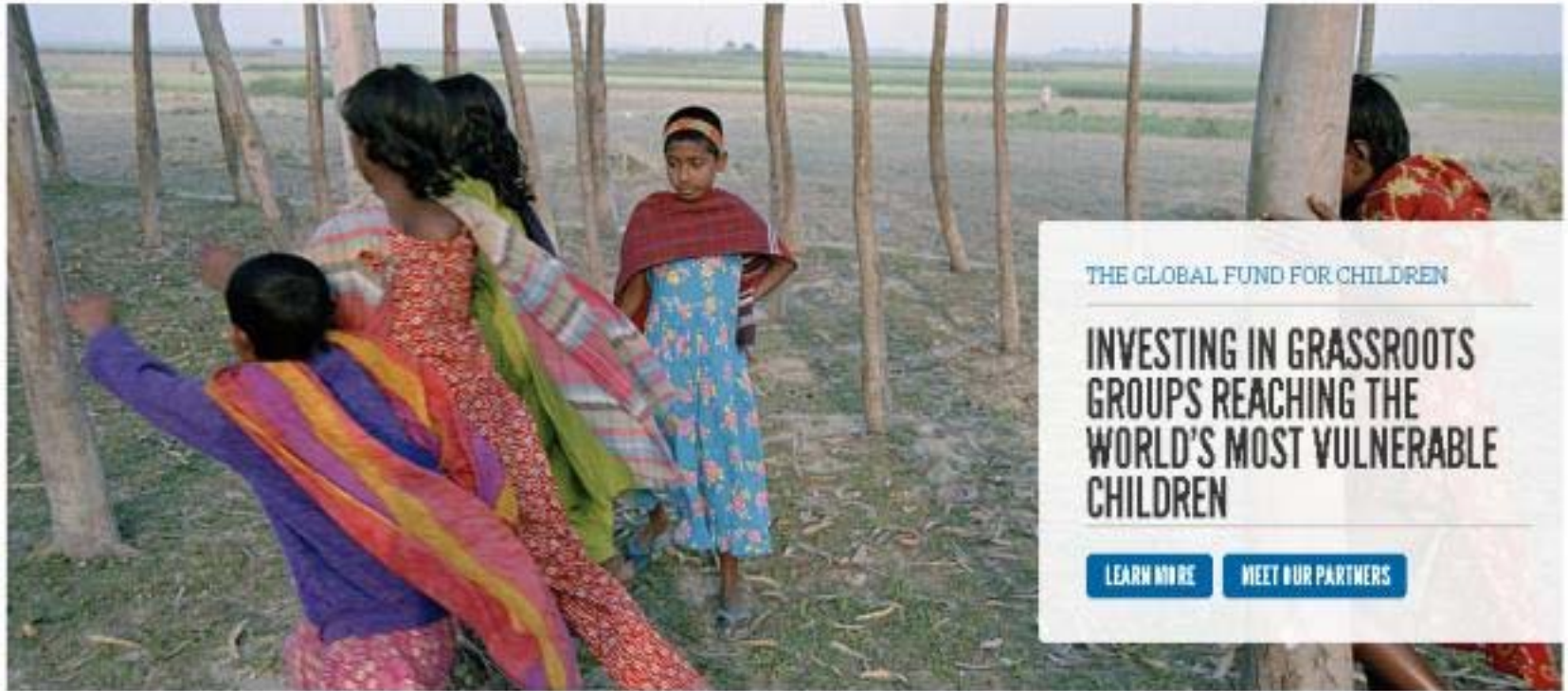


Middlebury Center for
SOCIAL ENTREPRENEURSHIP

January 2, 2014



Greg Dees (1950 – 2013), founding faculty director of the Center for the Advancement of Social Entrepreneurship (CASE) at Duke's Fuqua School of Business



THE GLOBAL FUND FOR CHILDREN

**INVESTING IN GRASSROOTS
GROUPS REACHING THE
WORLD'S MOST VULNERABLE
CHILDREN**

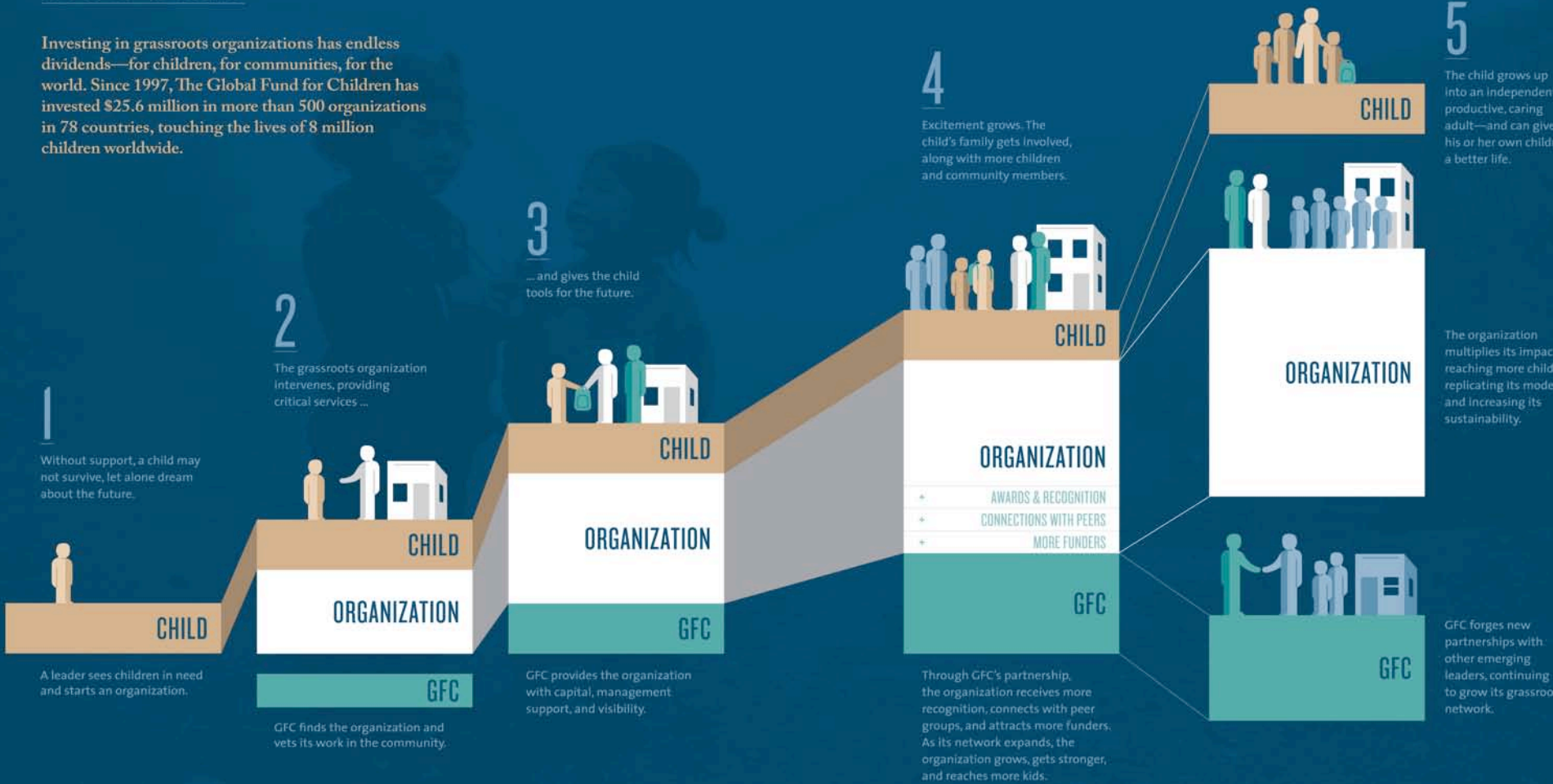
[LEARN MORE](#)

[MEET OUR PARTNERS](#)



HOW IT WORKS

Investing in grassroots organizations has endless dividends—for children, for communities, for the world. Since 1997, The Global Fund for Children has invested \$25.6 million in more than 500 organizations in 78 countries, touching the lives of 8 million children worldwide.



Lessons from the CSE

- The appeal of ‘social entrepreneurship’
- A more complete view of economics
- Putting the liberal arts to work





SWORD & PLOUGH



Middlebury Center for
SOCIAL ENTREPRENEURSHIP

January 2, 2014



WISE

WOMEN'S INITIATIVE FOR
SELF-EMPOWERMENT



Middlebury Center for
SOCIAL ENTREPRENEURSHIP

January 2, 2014

Our CSE Fellows



Middlebury Center for
SOCIAL ENTREPRENEURSHIP

January 2, 2014



How social entrepreneurship is a great Trojan horse



Middlebury Center for
SOCIAL ENTREPRENEURSHIP

January 2, 2014